



HANOI MECHANICAL COMPANY

CASTING
MACHINING
FABRICATING

HEAD OFFICE: NO. 76 NGUYEN TRAI, THUONG DINH,
THANH XUAN DISTRICT, HANOI, VIETNAM

Factory: Thuan Thanh 3 Industrial zone, Thanh Khuong,
Thuan Thanh, Bac Ninh, Vietnam

Website: Hameco.com.vn

Sales Department: (+84) 024 35587953
sales@hameco.com.vn



JAS-ANZ



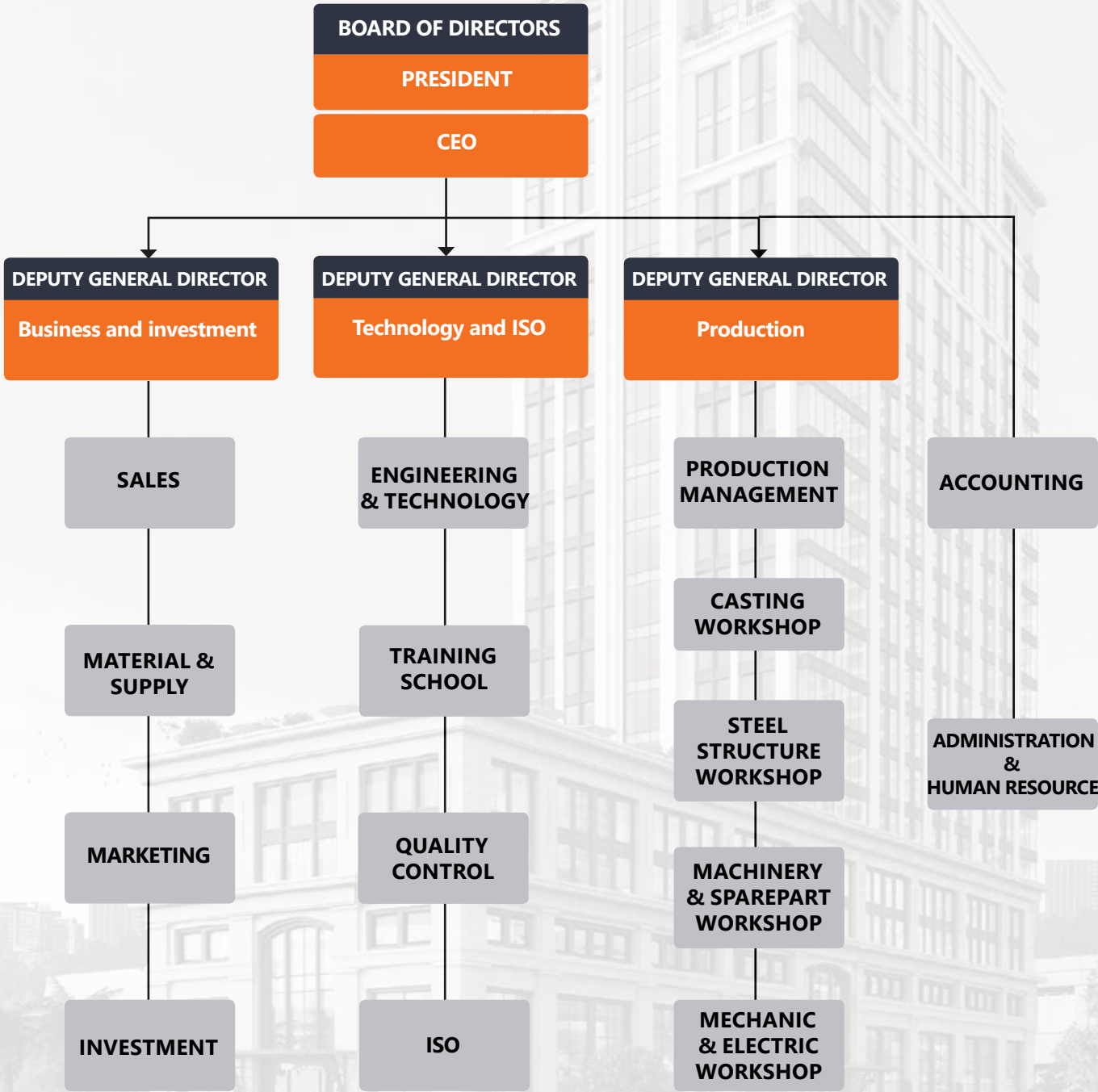
ISO 9001:2015



HAMECO was established since 1958, manufactures machinery and also serving domestic and international demands from a wide range of industries:

- | | |
|---------------------------------|---|
| • Transport: | Automobile , railways |
| • Heavy Equipment : | Construction , farming and mining |
| • Machine Tools : | Machining , casting |
| • Plant Equipment: | Chemical , petroleum , paper , sugar textile , steel and power plants |
| • Defense : | Vehicles , storage and supporting equipment |
| • Electrical Equipment : | Motors , pumps |

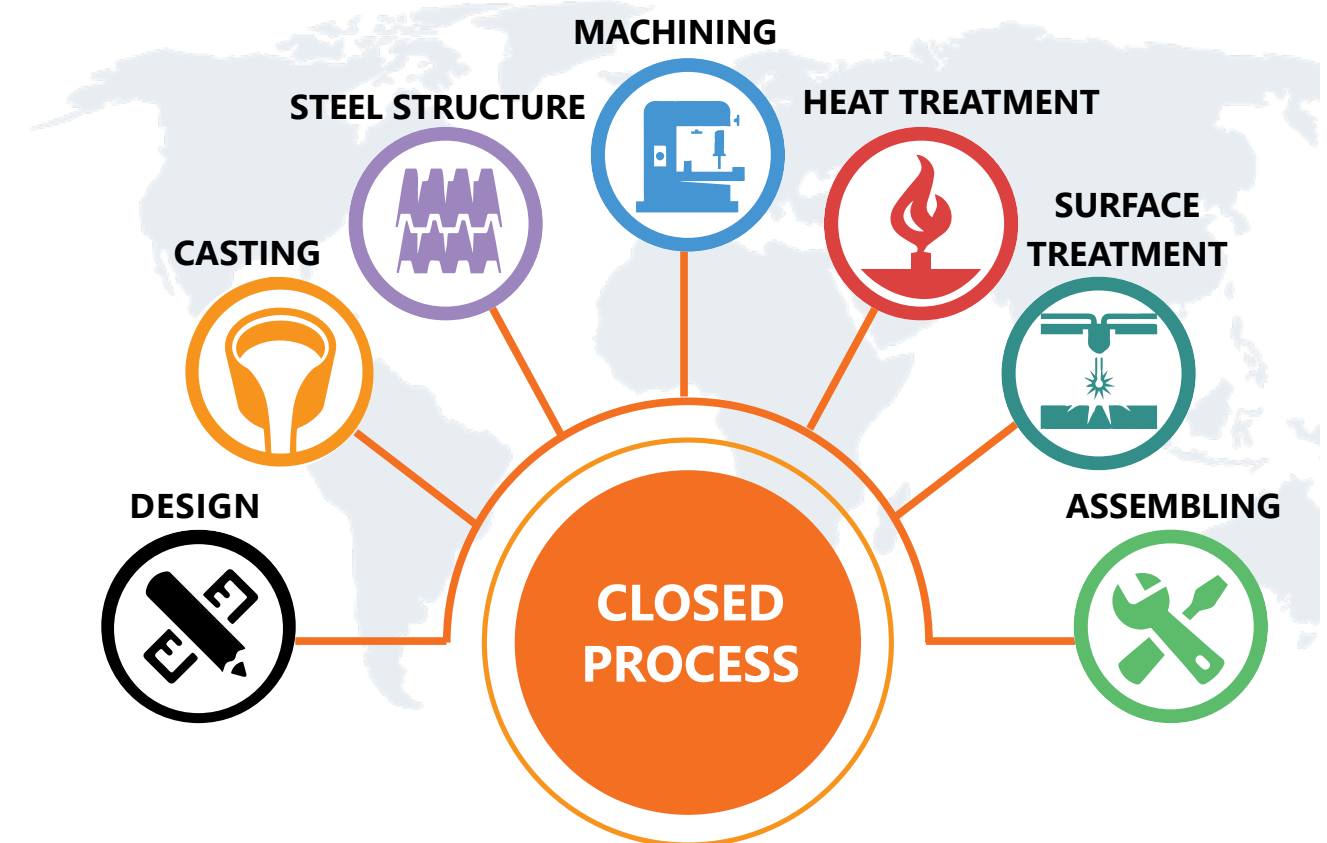
ORGANISATION CHART





In 2015, HAMECO has completed the moving project of new full-equipped and modern factories (Area: 160,000 m²) from centre of Hanoi to Thuan Thanh 3 Industrial Zone, Thanh Khuong, Thuan Thanh, Bac Ninh (about 30 kms from Hanoi)

Hameco has a comprehensive manufacturing process from Design, Casting, Fabrication, Machining, Heat treatment, Assembling to Full equipment manufacture for various industries



CERTIFIED TO
ISO 9001-2015 STANDARD



BAND SAW MACHINE

MODEL
BS-220
BS-250
BS-400



BAND SAW MACHINE BS-250

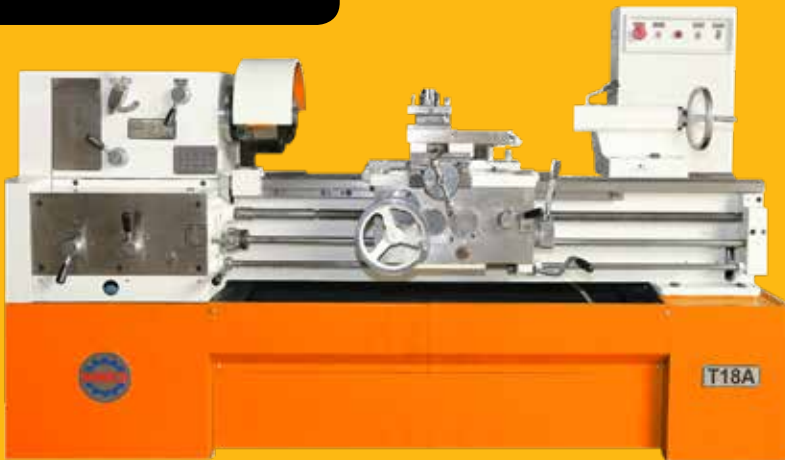
DRILLING MACHINE



DRILLING MACHINE K525

UNIVERSAL LATHE

MODEL
T14L
T630X3000
T630X1500
T18A
T18B



UNIVERSAL LATHE T18A

PLANING MACHINE



PLANING MACHINE B365

PRODUCT & SERVICE | CASTING



Counter Weight
of Excavator

- Size: 3500x1500x2000 (mm)
- Weight: 8000 (kg)
- Material: FC - 200



Manhole cover -
Rough surface

- Size: 1000x1000x80 (mm)
- Weight: 176 (kg)
- Material: FC-600-3



Manhole cover

- Size: 360x130x6 (mm)
- Weight: 8 (kg)
- Material: FC-200



Motor cover

- Size: 800x600x600 (mm)
- Weight: 300 (kg)
- Material: FC-250



Chain box
housing of
16.5HP
tractor

- Size: 511x172x68 (mm)
- Weight: 9 (kg)
- Material: FC200



Pump

- Size: Ø262 x95 (mm)
- Weight: 1000 (kg)
- Material: FCD-250



Oil pump cover

- Size: ø400x170 (mm)
- Weight: 0.5 (kg)
- Material: FC-200



Valve body

- Size: 600x550x250 (mm)
- Weight: 70 (kg)
- Material: Steel C45



Gear housing of
10HP tractor

- Size: 700x400x350 (mm)
- Weight: 60 (kg)
- Material: FCD-500



Gear housing of
8HP tractor

- Size: 500x380x200 (mm)
- Weight: 25 (kg)
- Material: FC-300



Gear housing of
hydraulic tractor

- Size: 500x250x200 (mm)
- Weight: 40 (kg)
- Material: FCD500



Cross-tie

- Size: 1800x200x150 (mm)
- Weight: 70 (kg)
- Material: FCD-600-8



Roller type 32-68
- Pipe bending
Machine Model
BA4

- Size: ø122x100 (mm)
- Weight: 6 (kg)
- Material: FC-300



Guide vanes

- Size: 1000x450x80 (mm)
- Weight: 190 (kg)
- Material: SUS 304



Excavator shaft

- Size: 600x900x300 (mm)
- Weight: 170 (kg)
- Material: FCD600-3

PRODUCT & SERVICE | CASTING



Truck door cam
locks

- Size: 150x100xØ30 (mm)
- Weight: 2.5 (kg)
- Material: Steel C45



Wheel of band
saw machine

- Size: Ø600 (mm)
- Weight: 26 (kg)
- Material: FC-200



Fire hydrant
standpipe

- O-ring size: 110 (mm)
- Weight: 150 (kg), Pressure: 30 kg
- Material: FC, FCD - 200,SUS, Brass



Cooling bed of
steel laminating
equipment

- Size: 1375x400x300 (mm)
- Weight: 178 (kg)
- Material: FCD-500



Roller of vertical
milling machine

- Size: Ø1400 x 800 (mm)
- Weight: 3000 (kg)
- Material: Alloy cast iron

LARGE-SIZED MACHINING



- **Hydraulic Assembly - Cylinder unit - Steel laminating equipment**
- Size: 6000x1400x1600(mm)
- Weight: 4000(kg)



- **Steel laminating equipment**
- Size: 5000x1500x1700(mm)
- Weight: 4500(kg)



- **Roller - Lining up Roller Assembly- Steel laminating equipment**
- Size: $\varnothing 250 \times 1000$ (mm)
- Weight: 160 (kg)
- Material: FCD 600-3



- **Straightening Grid Plate - Cooling bed Assembly - Steel laminating equipment**
- Size: 1375x400x300 (mm)
- Weight: 178 (kg)
- Material: FCD 500-7



- **Cement rolling shaft machining**
- Size: 7000 x $\varnothing 700$ (mm)
- Weight: 21000 (kg)
- Material: Steel C45



- **Repairing Rotor Shaft of steam turbine on SUT 160**
- Size: $\varnothing 1200 \times 5000$ (mm)
- Weight: 15000 (kg)
- Material: Alloy Steel



- **Pump 1200 m³/h**
- Size: $\varnothing 1200 \times 3000$ (mm)
- Weight: 1500 (kg)
- Material: Steel Q345



- **Guide vanes of pump 36000 m³/h**
- Size: 400x6000x120 (mm)
- Weight: 3500 (kg)
- Material: Steel SUS304



- **Guide vanes**
- Size: 800x500x70 (mm)
- Weight: 1000 (kg)
- Material: Alloy cast iron



- **Babbitt Bearing**
- Size: $\varnothing 1200 \times 800$ (mm)
- Weight: 100 (kg)
- Material: Alloy cast iron



- **Head of shell for Cement mill**
- Size: $\varnothing 1500 \times 1500$ (mm)
- Weight: 1500 (kg)
- Material: Alloy cast iron



- **Pump 36000 m³/h - Horizontal type**
- Size: 2000x2000x1500 (mm)
- Weight: 2500 (kg)
- Material: FC-250

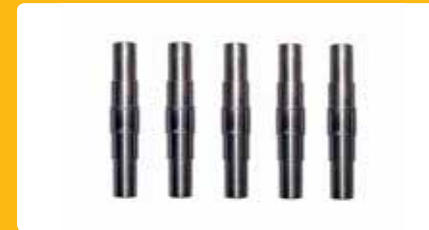
PRECISE MACHINING



- **Metal mould**
- Size: 1500x1200x500 (mm)
- Weight: 1400 (kg)
- Material: Aluminum



- **Ball bearing**
- Size: $\varnothing 335 \times 95$ (mm)
- Weight: 24.1 (kg)
- Material: Steel C45



- **Transmission shaft**
- Size: $\varnothing 32 \times 165$ (mm)
- Weight: 0.8 (kg)
- Material: Steel C45



- **Gear of Pipe bending machine**
- Size: m = 2, z = 21
- Weight: 1.5 (kg)
- Material: Steel C45



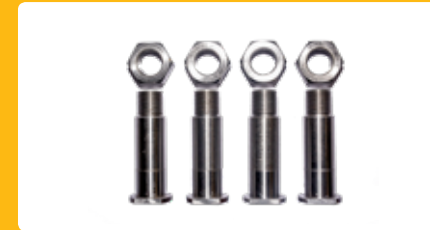
- **Metal mould**
- Size: 1200x1200x250 (mm)
- Weight: 3500 (kg)
- Material: Aluminum



- **Machine tool spindle**
- Size: 550x400x450 (mm)
- Weight: 80 (kg)
- Material: FC-300



- **Drive wheel**
- Size: D500x130 (mm)
- Weight: 221.89 (kg)
- Material: Steel C45



- **Locating pin**
- Size: $\varnothing 50 \times 100$ (mm)
- Weight: 0.75 kg
- Material: Steel C45



- **Cylinder part of steel laminating equipment**
- Size: 400x240x165 (mm)
- Weight: 77 (kg)
- Material: Steel C45-Q345B



- **Metal mould**
- Size: 1500x1500x400 (mm)
- Weight: 5000 (kg)
- Material: Aluminum



- **Bearing Bush**
- Size: $\varnothing 180 \times 80$ (mm)
- Weight: 3 (kg)
- Material: Brass alloy



- **Drive shaft of gearbox**
- Size: $\varnothing 335 \times 40$ (mm)
- Weight: 2.2 (kg)
- Material: Steel C45



- **Driving gear**
- Size: m=10, z=44; $\varnothing 480 \times 100$ (mm)
- Weight: 50 (kg)
- Material: FC-200



- **Metal mould**
- Size: 700x1000x1000 (mm)
- Weight: 5000 (kg)
- Material: Aluminum

HYDRO ELECTRICITY EQUIPMENT



- Draft Tube Liner HydroPower Projects
- Weight: 10,000 kg
- Material: S355JR /Steel Q345



- Draft Tube Liner HydroPower Projects
- Weight: 18,000 kg
- Material: S355JR /Steel Q345



- Draft Tube Liner HydroPower Projects
- Weight: 22,000 kg
- Material: S355JR /Steel Q345



- Spiral Casing - HydroPower Projects
- Weight: 40,000 kg
- Material: S355JR /Steel Q345



- Stay ring - Spiral Casing - HydroPower Projects
- Weight: 10,000 kg
- Material: S355JR /Steel Q345



- Pelton Turbine
- Weight: 1,200 kg
- Material: Steel SUS304

MACHINE EQUIPMENT



- CNC cage welding machine
- Weight: 12,500 kg
- Size: $\Phi 12,000 \times 6,000 \times 4,800$ mm
- Material: Steel Q345



- Automatic embroidery machine frame
- Weight: 5,000 kg
- Material: Steel Q345

CEMENT EQUIPMENT



- Preheater tower
- Weight: 30,000 kg
- Material: Steel Q345



- Housing of Coal Vertical Mill
- Weight: 100,000 kg
- Material: Steel Q345



- Support of cement vertical raw mill
- Weight: 10,000 kg
- Material: Steel Q345



- Cement vertical raw mill housing
- Weight: 150,000 kg
- Material: Steel Q345



- Paper powder furnace system
- Weight: 350,000 kg
- Material: Steel Q345



- Limestone crusher cement housing
- Weight: 50,000 kg
- Material: Steel Q345

SUGAR CANE AND AUTOMOTIVE EQUIPMENT



- Sugarcane plants' equipment for NAT&L's Sugar Factory



- Equipment for Tay Ninh Bourbon Sugar Factory



- Truck body
- Truck loads type: 1,200 kg
- Size: 2,200 x 1,500 x 1,200 mm
- Material: SS400

PRODUCTION CAPACITY | CASTING

- 40 Years of experience in Metal Casting
- Casting capacity: 12,000 tons /year
- Land area: 10000 m²



Casting technology

2 Furan resin sand iron casting lines (Australia)

Furan resin sand is a kind of self-hardening sand, which is suitable for complex metal casting products with high surface quality and good dimensional tolerance. This process could be used to produce middle and large size of iron castings from dozens of kilograms to dozens of tons. Resin sand has been regenerated 95% through automatic sand regeneration system.

Suitable products: big-weighted and complex components
Suitable materials : Gray cast iron, ductile iron, steel
Max. weight : 5 tons / cast iron product, 3 tons / steel product
Casting capacity: 9000 tons / year



Automatic green sand iron casting line (Germany – American)

Green sand is the cheapest molding material worldwide that appropriate with high quality surface but light products

Suitable products: light weight with large quantity
Suitable materials : Gray cast iron, ductile iron
Max weight : 1-30 kilograms / part
Casting capacity: 3000 tons / year



“ Casting workshop is built environmentally friendly in accordance with quality standards, which ensures the with high air by investing in dust collector and sand regeneration systems

PRODUCTION CAPACITY | CASTING

GENERAL INFORMATION

Standards: JIS, GOST, DIN, ISO, TCVN, GB

Materials and Min - Max. Weight:

FC150 - FC200	1- 7000 Kg
FC250 - FC300	1- 4000 Kg
FCD450 - FCD700	1- 2500 Kg
Antifriction Cast-iron (Phosphor)	1- 12.000 Kg
Carbon steel	5 - 3000 Kg
Alloy steel Cr-Ni	3- 1000 Kg
Alloy steel Mn ~10-17%	5- 350 Kg
Alloy steel non-corrosive (%C>0,15)	2- 1000 Kg
Alloy steel non-corrosive (%C<0,15)	2- 100 Kg

Size:

Max.	3000x3000x3000mm
Min.Thickness wall	Steel - 08 mm
Thickness wall	Cast-iron - 04 mm

Export market:

Japan, Korea, Canada, United States, EU, UK...

Inductotherm melting furnaces



Inductotherm medium frequency induction melting furnace systems: 03 furnaces and 06 furnace mouths
Capacity: 20 tons of cast iron or 10 tons of steel / time



Pattern workshop

Hameco pattern workshop has ability in making wooden and metal patterns



Wooden pattern making

QUALITY TEST METHODS OF CASTING PRODUCT

	Test and inspection	Equipment	Model
1	Chemical Test: Steel, Cast Iron, Copper Alloy, Aluminium Alloy	Optical Emission Spectrometer Metal Analyzer of 24 elements	ARL -3460 Switzerland
2	Microstructure Test	Metallographic Microscope	AXIOVERT 100A Germany
3	Humidity Test and Strenght Test of Sand Compound	Moisture Meter	ULTRAX
4		Sand Rammer Foundation Tester	315
5		Electric Permmeter	338B.MD1
6		Universal Strength Tester Machine	3WZ
7		Experimental sanding machine	SSZ
8	Chemical Analysis	Sand Mixing Machine	HOBART
9		2-time Distiller	WSV/4D
10	Thermometer Test of Alloys	CE - Smarter	HCE
11		Laser Thermometer	DT8011H
12		IR- Thermometer Digital	IR-AH
13	Strenght Test and Impact Test	Handle Thermometer	TM-2000
14		Strenght Test Machine	ZDTE-30
15	Hardness Testing	Impact Tester	PS30
16		Hand-held Hardness Tester	HLN-11A
17	Metal Thickness Testing	Hand-held Hardness Tester	HH-411
18		Metal Digital Thickness Gauge	TMIKEE
19	Casting Defect Testing	Ultrasonic Machine	EPOCH - XT



ARG optical emission spectrometer Metals Analyzer of 24 elements(Switzerland)



General laboratory



300 KN Tensile-Strength-Stress-Strain testers



Moulding sand testing equipment systems

- 60 Years of experience in machining
- Workshop area: 12000m²
- Equipment quantity: 200

“ HAMECO enjoys considerable advantages in terms of machining and fabricating large-weighted and large-sized parts



Vertical turning machine SKJ 32-63A
Machining capacity: Max.diameter 6300mm
Max.length 2500mm



Cylindrical grinding machine 3A172
Machining capacity: Max.diameter 500mm
Distance btw center 4000mm



Horizontal turning machine SUT160
Machining capacity: Max.diameter 1600mm
Max.length 12000mm



Bed sharpening machine HC13T
Machining capacity: X/Y/Z 8000 1800 1500mm



Boring machine W250
Machining capacity: X/Y/Z 7000 2000 4000mm

“ A large number of new and modern CNC machines and equipment are invested in 2018 for ultra precision machining



CNC Lathe machine
Model: TNL-130AL
Capacity: Max. turning diameter $\Phi 250$ mm
Max. turning length - 975mm
Origin: Tongtai - Taiwan **(New 2018)**



CNC Horizontal machining center with full 360 rotary machining axis
Model: HCN-8800
Capacity: X/Y/Z travel 1,400x1,200x1,325mm
Origin: Mazak - **(New 2018)**



CNC Vertical machining center
Model: TMV-1050QII
Capacity: X/Y/Z travel 1,050/600/530mm
Origin: Tongtai - Taiwan **(New 2018)**



CNC Cylinder Grinder
Model: GPS-30B.75 and GPS-0B.100
Capacity: Max. grinding diameter $\Phi 300$ mm
Distance between centers
GPS-30B.75-750mm
GPS-30B.100-1,000mm
Origin: Shigiya - Japan **(New 2018)**

PRODUCTION CAPACITY | MACHINING

SUMMARY OF MACHINING CAPACITY

ELECTRIC DISCHARGE MACHINING

Machine	Model	Width	Length	Plate thickness	Origin
CNC wire cut E.D.M CW machine	530-F	530mm	300mm	250mm	Chmer - Taiwan
CNC electrical dischage machine	75EZ Ra = 0,032				Chmer - Taiwan

MACHINING CENTER

Model	X axis	Y axis	Z axis	Origin	Max.weight
HCN-8800	1400mm	1200mm	800mm	Mazak - Japan (NEW 2018)	2200kg

TURNING

Machine	Model	Max. diameter	Max.length	Origin	Max.weight
CNC	TNL-130AL	245mm	1000mm	Tongtai - Taiwan (NEW 2018)	6500kg
CNC	MAZAK - SLANT TURN 25ATC M/C	300mm	1000mm	Mazak - Japan	6500kg
CNC	S50i MAS	240mm	500mm	Kovosvit - Czech Republic	4500kg
CNC	S3 - B Slant 3	300mm	500mm	Nakamura - Japan	5500kg
Large-sized	SUT 160 CNC	1600mm	12000mm	Skoda - Czech Republic (Special)	30000kg
Large-sized	SKJ 32-65A	6300mm	2500mm	Russia (Special)	30000kg
Large-sized	SU-100	1000mm	6000mm	Russia	18000kg
Large-sized	1M557	2800mm	1600mm	Russia	15000kg
Large-sized	1M65	600mm	2000mm	Russia	15600kg
Large-sized	1M553	1800mm	1800mm	Russia	6,000kg

MILLING

Machine	Model	X axis	Y axis	Z axis	Origin	Max.weight
Vertical CNC	TMV-1050QII	1050mm	600mm	530mm	Tongtai - Taiwan (NEW 2018)	5900kg
5 axis CNC	1450 Speed 5AX A=90, C=360	1450mm	900mm	750mm	Kovosvit - Czech Republic	11000kg
CNC	CNC Makino FNC 60	610mm	410mm	450mm	Japan	4500kg
Bed milling	6641	4000mm	1600mm	1200mm	Russia	10000kg
Bed milling	6642	3000mm	1400mm	600mm	Russia	60000kg
Bed milling	6606	2500mm	800mm	600mm	Russia	3000kg
Bed milling	6610	2500mm	1000mm	800mm	Russia	35000kg

PRODUCTION CAPACITY | MACHINING

BORING

Model	X axis	Y axis	Z axis	Origin	Max.weight
W250	7000mm	2000mm	4000mm	Russia (Special)	40000kg
2657	5000mm	1500mm	2500mm	Russia	2000kg
2614	1000mm	800mm	600mm	Russia	500kg
2622	2000mm	1500mm	800mm	Russia	2500kg
26E635	2000mm	1000mm	1200mm	Russia	29400kg
2A450	1000mm	600mm	600mm	Russia	500kg

GRINDING

Type	Model	Max.grinding diameter	Distance between centers		Origin
Cylindrical	GPS-30B.75	300mm	750mm		Shigiya - Japan (NEW 2018)
Cylindrical	GPS-30B.100	300mm	1000mm		Shigiya - Japan (NEW 2018)
Cylindrical	3A172	500mm	4000mm		Russia
Cylindrical	3M164	500mm	3000mm		Russia
Cylindrical	3M151	350mm	200mm		Russia
		Length	Width	Height	
Bed	SFPZ	6000mm	1500mm	1000mm	Russia
Flat	3B722	1000mm	400mm	400mm	Russia
Flat	3D722	1200mm	400mm	400mm	Russia

SHARPING

Model	X axis	Y axis	Z axis	Max.weight
HC-13T	8000mm	1800mm	1500mm	30000kg
7242	5000mm	1500mm		10000kg
7210	3000mm	1000mm	1000mm	5000kg

DRILLING

Model	Max.drilling diameter
258	100mm
VR-8	80mm
VR-6	60mm
2H57	55mm
VR-4	50mm

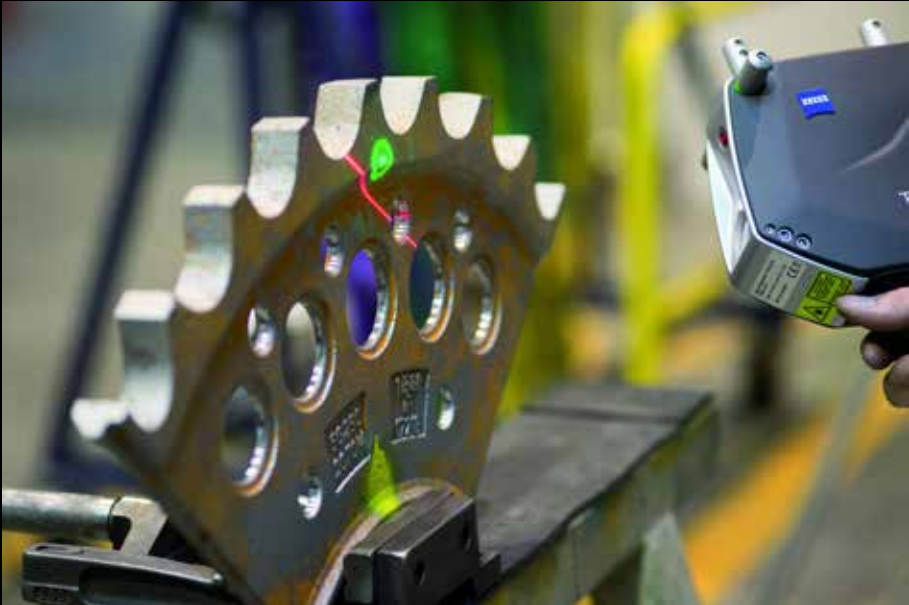
MEASURING DEVICES

Machine	Model	X axis	Y axis	Z axis	Origin
3D scanner	T-SCAN CS				Carl Zeiss - Germany (NEW 2018)
3D measuring machine	Contura G2	1000mm	900mm	700mm	Zeiss - Germany (NEW 2017)

QUALITY TEST METHODS OF MACHINING PRODUCT

	Test and inspection	Equipment	Model
1	Dimension and Geometric Testing	Vernier, Inside & Outside Calipers, Dial gauge...	Mitutoyo
2	Hardness Testing	Rockwell Hardness Tester	TW-2M (644)
3		Brinell Hardness Tester	HP-250
4	Scanning and Measuring	3D Scanning Platform Machine	CONTURA G2
5	Non-Destructive Testing	Dye Penetration Test Kit	Magna flux
		Ultrasonic Machine	EPOCH XT
11	Metal Thickness Testing	Metal Digital Thickness Gauge	TMIKEE
12	Allowable Noise Level Testing	Noise Level Meter	HY-104
13	Surfaces Roughness Testing	Hand-held Roughness Tester	E-35A
14		Hand-held Roughness Tester	SURFTEST SJ-210
15	Geometrical Specification of Gear	Mating Gear Testing Machine Precision Gear Testing Machine	1624
16		Gear Runout Tester	405
17		Radial Runout Tester	1850
18	Dimension Tessting by Optical Measuring Machine	Optical Measuring Machine	4547
19	Dynamic Balancing Testing	Dynamic Balancing Machine	ZC 300 G

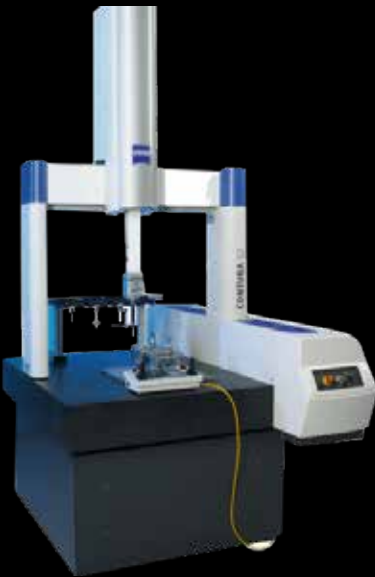
“Hameco has invested in modern equipment for increasingly precise product measurement



Metal part dimensional measurement



3D Digitizaion/Lazer Scanning
Model: T-SCAN CS
Application: Scanning object surface split into a whole three-dimensional model
Origin: Carl Zeiss - Switzerland (New 2018)



3D CMM Coordinate-measuring machine
Model: CONTURA-G2
Application: Measure the geometric shapes of objects
Origin: Carl Zeiss - Switzerland (New 2017)



A system of crane, overhead crane, gantry crane with the loading capacity of 50 tons

HAMECO possesses the ability in fabricating steel structure, machining large-sized and large-weighted parts/spare parts for heavy industries of Automotive, Steel laminating, Hydro-thermal-wind electricity, Petrogas, Shipbuilding, Ore mining and Other industries of Chemistry, Sugar cane and Papermaking...



Indoor workshop
(Area: 12,000m²)



Outdoor assembly area
(Area: 80,000m²)



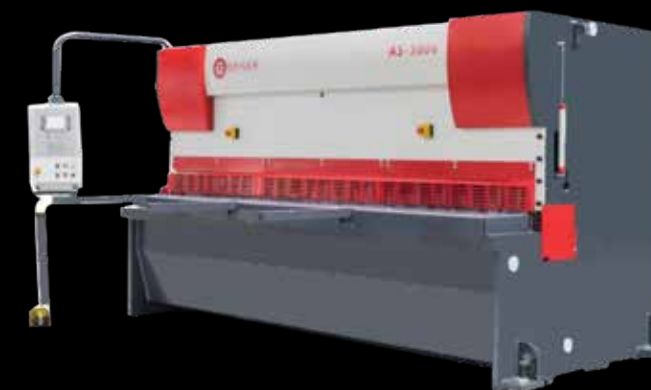
CNC Hydraulic press brake

Model: SMART XL 60600

Capacity: Bending length - 6050mm
Bending capacity -600tons

Origin: Dener - Turkey **(New 2018)**

In 2018, various new and modern machines and equipment have been invested to higher capacity and product quality



**CNC Hydraulic guillotine shearing
(Variable rake angle)**

Model: AS 16-6100

Capacity: Cutting length - 6160mm
Cutting capacity -16mm

Origin: Dener - Turkey **(New 2018)**



CNC 4-roll bending rolls

Model: HEL 3143

Capacity: Max. plate width - 3050mm
Max. Thickness (Full length) - 30mm
(Half length) - 33mm

Origin: Dener - Turkey **(New 2018)**

SHEAR/ PRESS BRAKE

Machine	Model	Width	Length	Plate thickness	Origin
CNC Hydraulic Shearing (Variable rake angle)	AS 16-6100	∞	6160mm	16mm	Dener - Turkey (NEW 2018)
Band saw machine	BS250	1450mm	660mm	1450mm	Hameco - Vietnam
Gas/Plasma CNC cutting machine		4000mm	12000mm	Plate steel: 100mm Stainless steel: 25mm	Heperthern - USA
CNC Hydraulic Press brake	SMART XL 60600		6000mm	16mm	Dener - Turkey (NEW 2018)

BENDING

Machine	Model	Max. steel plate width	Max. steel plate thickness	Origin
CNC 4-roll bending rolls	HEL 3143	3000mm	25mm	Faccin – Italy (NEW 2018)
3-roll bending rolls		3000mm	25mm	

WELDING

Machine	Model	Origin
Semi-auto	ESAF LHF 630, THF 630, LHF 400, LHE 300 Panasonic KRII500, OTC 500, ESAF LAR630, MKR300	Sweden
Column-Boom welding system	A6 SFD1	Sweden
Gouging welding machine	Gouging 1000 - Dragon	Korea

QUALITY TEST METHODS OF FABRICATION PRODUCTS

	Test and inspection	Equipment	Model
1	Ultrasonic Testing of Welding Seam	Ultrasonic Machine	EPOCH XT
2	Penetration Testing	Dye Penetration Test Kit	MAGNAFLUX
3	Metal Thickness Testing	Metal Digital Thickness Gauge	TMIKEE
4	High Level and Distance Testing	Theodolite	NT-2CD
5		Automatic level surveying	AX-1S
6		Line Laser Level	LS-808
7	Magnetic Testing	Fluorescent Magnetic Particle	MAGNAFLUX
8		York Machine	W3HDK
9	Dry Film Thickness	Dry Film Digital Thick Gauge	FISHER
10		Dry Film Digital Thickness Gauge	POSITECTOR 6000
11	Painting Environment Checking	Dew Point Meter	Elcometer G319S
12	Coating Porosity Testing	DC Holiday Detector	Elcometer D266-4
13	Adhesion Testing	Pull -off Tester	Elcometer F510-20S
14	Surfaces Roughness Testing	Handle Roughness Tester	E-35A
15		Handle Roughness Tester	SURFTEST SJ-210
16	Visual Testing of Welding Seam		

HEAT TREATMENT

An integrated auto-controlled system of heat treatment furnaces

Induction heating equipment TS 300 (NEW 2018)
Auto-controlled shaft furnaces (Ø600 x 5000mm)



Induction heating equipment TS 300



Shaft furnace system for heat treatment



Induction heating for preheating



Chamber furnace system for heat treatment

SURFACE TREATMENT

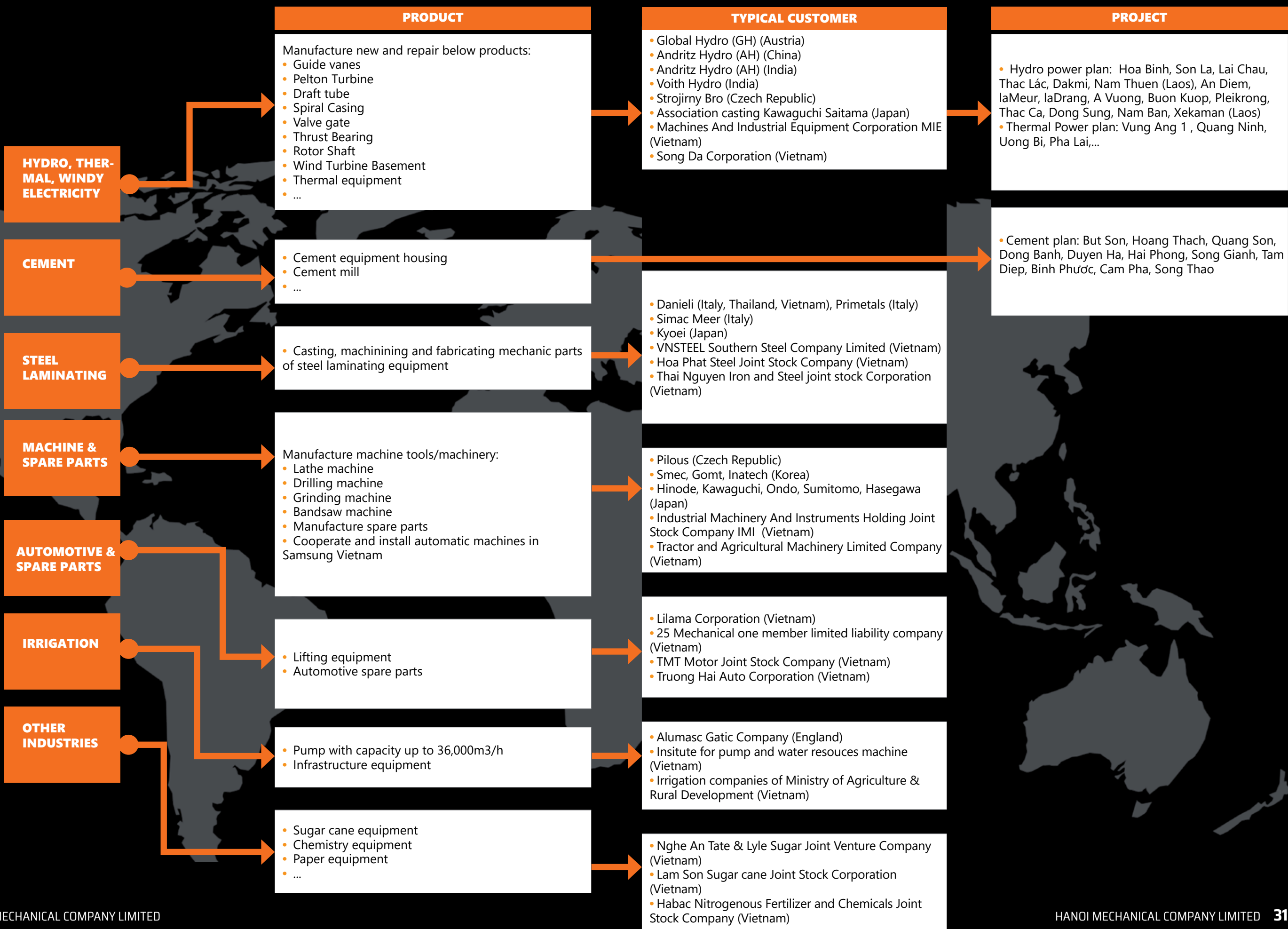
Spinner - Hanger shot blasting machine	Capacity: 600 tons / month
Shot blasting room	Capacity: 80kW Size: 6,000x6,000x1,500mm
Painting room	Capacity: 30kW Size: 6,000x3,000x2,500mm



SINTO Shot blasting machine - New 2018

Model:	KSB-25A
Max. capacity:	600 tons/ month
Max. hanger load:	5 tons
Room size:	2,600x2,400x4,430mm
Operation time:	15 minutes/ time
Feature:	04 impeller units, complicatedly shaped products can be processed by a single cycle with the drive block system at the optimum injection angle.

TYPICAL PROJECTS
AND CUSTOMERS



TYPICAL PROJECTS
AND CUSTOMERS



HANOI MECHANICAL COMPANY LIMITED

HEAD OFFICE: NO. 76 NGUYEN TRAI, THUONG
DINH, THANH XUAN DISTRICT, HANOI, VIETNAM

Factory: Thuan Thanh 3 Industrial zone, Thanh Khuong, Thuan Thanh,
Bac Ninh, Vietnam

Website: hameco.com.vn

Sales Department: (+84) 024 35587953
sales@hameco.com.vn